

# Learning Management System (LMS)

---

The Office of Child Nutrition



Contains these SFSP trainings:

2025 SFSP Updates

Sponsor Financial Viability, Capability and Accountability

Civil Rights

Non-Congregate Meal Service

Closed Enrolled Sites

Sponsor Monitoring & The SED Review Process

Allowable & Unallowable Costs

SFSP Claim Process

The SFSP for Potential New Sponsors

Open Sites

# How It Works:

The LMS tracks all the trainings you have completed and updated CNMS when your annual mandatory SFSP training has been completed

You will also receive a certificate for every training completed

## Certificate of Completion

This is to certify that

---

has attended

**Summer Food Service Program: Sponsor Financial Viability,  
Capability and Accountability**

on the date

---

This program has been approved for 3 credit hours



A handwritten signature in black ink, appearing to read "K. B. Vumbaco".

---

Kimberly Vumbaco



# New Users

- If you did not get an email with your login information, you can request access to the LMS by completing the [request form](#)

## Learning Management System (LMS) Access Needed

First Name \*

Last Name \*

Email Address \*

**Check off the Child Nutrition Programs you would like to access training on: \***

- National School Lunch Program (NSLP)
- School Breakfast Program (SBP)
- Fresh Fruits and Vegetables Program (FFVP)
- Summer Food Service Program (SFSP)
- The Special Milk Program (SMP)

**Select what your role should be in the system: \***

- SFSP Administrator/Food Service Director: Oversees all food service operations for the school district/SFSP sponsor including overseeing all employees at sites/recipient agencies (RAs), building).
- Site Supervisor/Manager: Oversees the daily operation of food service and supervises food service staff at one or multiple sites. (RA, building,). Ex. Cook Manager, Site Supervisor, Kitchen Manager/Supervisor.
- Food Service Staff: Staff who assist with preparation, cooking, and/or serving food, cleaning work areas, etc. Food Service Staff report to Site Supervisor/Cook Manager. Example: Servers, Cooks, Food Service helpers, Cashiers etc.
- Consultant
- Advocate

School Food Authority (SFA) / Sponsor Name \*

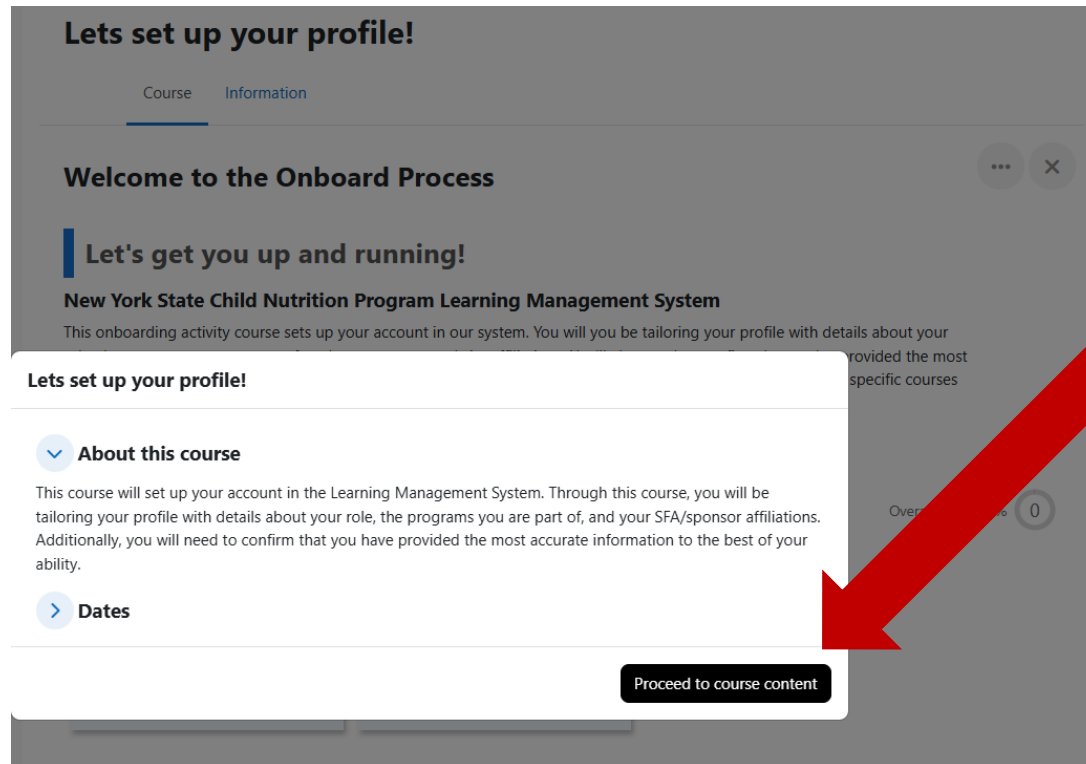
# Once you have access

- Go to the [site](#) and start learning!
- <https://cntraining.nysed.gov>
- Remember, your username is NOT your email, it is the username that was emailed to you!



A screenshot of the 'Internal CN Training' website. The top navigation bar is orange and contains links for 'Home', 'Site administration', 'Catalog', and 'Resources'. The main content area has a light blue background with a central graphic of a laptop displaying 'Digital Resources' surrounded by various educational icons. Below this is a navigation menu with 'SED Master Instructor Network', 'Signage Resources', and 'Digital Resources'. The main text area features the 'New York State Child Nutrition Programs' logo (an apple with a map of NY) and a welcome message: 'Welcome to the New York State Child Nutrition Program Learning Management System (LMS). This comprehensive online resource is dedicated to child nutrition program operators by offering guidance and training to make your Child Nutrition Programs successful and also will assist with meeting your Professional Standards.' There is also a link for 'LMS Guide' and a section for 'Recent Courses'.

# The first time you log into the site:



**Lets set up your profile!**

Course Information

**Welcome to the Onboard Process**

**Let's get you up and running!**

**New York State Child Nutrition Program Learning Management System**

This onboarding activity course sets up your account in our system. You will be tailoring your profile with details about your role, the programs you are part of, and your SFA/sponsor affiliations. Additionally, you will need to confirm that you have provided the most accurate information to the best of your ability.

**Lets set up your profile!**

- ▼ **About this course**  
This course will set up your account in the Learning Management System. Through this course, you will be tailoring your profile with details about your role, the programs you are part of, and your SFA/sponsor affiliations. Additionally, you will need to confirm that you have provided the most accurate information to the best of your ability.
- > **Dates**

**Proceed to course content**

Follow the prompts to set up your user profile

The screenshot shows the home page of the Child Nutrition LMS. At the top, there is a banner titled "SIGNAGE RESOURCES" with a red wavy line. Below the banner is a row of eight colorful posters: "THE FRESH FRUIT AND VEGETABLE PROGRAM", "Eat Local! Apples from...", "FARM TO SCHOOL! NY FOODS IN NY SCHOOLS", "TODAY'S LOCAL ITEMS", "FARM TO SCHOOL! NY FOODS IN NY SCHOOLS", "HYDRATE!", "Eat Local! Apples from...", and "The 50 States of America". A white dialog box with a black border is centered on the page. It has a blue header "Welcome to the Child Nutrition LMS!". The main text reads: "This comprehensive online resource is dedicated to child nutrition program operators by offering guidance and training to make your Child Nutrition Programs successful. Please follow this tour to familiarize yourself with the home page, the center of your learning experience." At the bottom of the dialog box are two buttons: "Next (1/9)" and "Skip tour". A large red arrow points from the top-left corner of the dialog box towards the "Next (1/9)" button. In the background, partially obscured by the dialog box, is the text "New York State Nutrition" and "Program Learning Management System (LMS). This".

**Welcome to the Child Nutrition LMS!**

This comprehensive online resource is dedicated to child nutrition program operators by offering guidance and training to make your Child Nutrition Programs successful. Please follow this tour to familiarize yourself with the home page, the center of your learning experience.

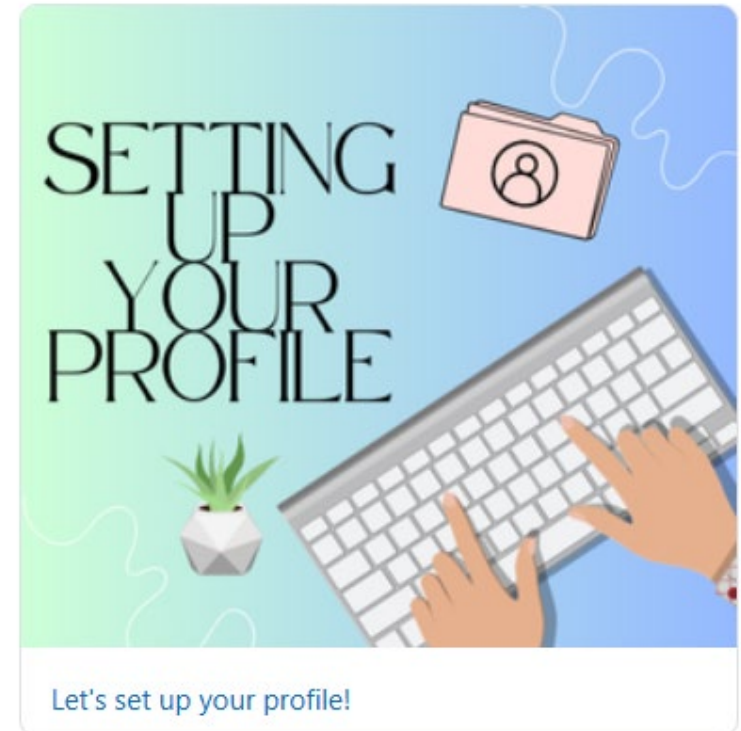
[Next \(1/9\)](#) [Skip tour](#)

A tour is available for your first visit to the LMS. Follow the prompts to get a tour of the website!

Be sure to set up your profile  
before starting any courses

Click on the “Setting  
up your profile” tile  
and complete to  
gain access to all  
the SFSP courses!

**All available courses**





Click on the Summer Food Service Program to access the SFSP training courses

Available Child Nutrition Programs



Then, select the course you want to take and review all tiles to complete the course.





Send any questions to:



[lmssupport@nysed.gov](mailto:lmssupport@nysed.gov)